



This Circular and its attachments (if any) are confidential to the intended recipient and may be privileged. If you are not the intended recipient you should contact ICS and must not make any use of it.

30 September 2020

COVID-19(20)159

**TO: LABOUR AFFAIRS COMMITTEE  
ALL MEMBERS & ASSOCIATE MEMBERS  
BI WEEKLY MEMBERS MEETING PARTICIPANTS  
INTERNATIONAL ASSOCIATION GROUP PARTICIPANTS  
CORONAWELFARE GROUP  
CORONA STRATEGY GROUP  
COVID EDUCATION GROUP  
CREW CHANGE TASKFORCE**

**ICS PUBLISHES VERSION 3 OF THE CORONAVIRUS (COVID-19) GUIDANCE FOR SHIP OPERATORS FOR THE PROTECTION OF THE HEALTH OF SEAFARERS**

**ACTION REQUIRED:**

*Members are invited to note that ICS has now produced version 3 of the Coronavirus (Covid-19) guidance for ship operators for the protection of the Health of Seafarers in conjunction with several other Industry Associations namely :-*

- The International Maritime Organization (IMO)
- The International Labour Organization (ILO)
- The European Centre for Disease Prevention and Control (ECDC)
- The International Maritime Health Association (IMHA)
- The International Transport Workers Federation (ITF)
- INTERTANKO

Members are invited to share the information with their respective contacts to ensure that they now use the new guidance immediately. A copy of the press release is attached overleaf.

Natalie Shaw  
Director Employment Affairs

# PRESS RELEASE

## International Chamber of Shipping updates health guidance on Coronavirus (COVID-19) to reflect latest knowledge

A great deal has changed since March, when the International Chamber of Shipping first issued guidance for the global shipping industry to help combat the spread of COVID-19. The entire world has been affected, seeing 32 million cases and around one million deaths globally\*. Whilst deaths, and indeed infection rates on ships stand at almost nothing in comparison, seafarers face the same risks as the general population and it is important to recognise that following health guidelines is essential to maintain this situation.

With that experience, knowledge of COVID-19 has substantially increased, and the International Chamber of Shipping has now published a new, fully updated version of ***Coronavirus (COVID-19) - Guidance for Ship Operators for the Protection of the Health of Seafarers***, reflecting the latest thinking and advice on the virus. Version 3 has an updated introduction reflecting the situation nine months on from the start of the global pandemic and adds two new annexes on PCR testing and Managing Multiple Cases of COVID-19 On Board Vessels. This replaces version 2, published in May, and should be read in conjunction with ***COVID-19 – Protocols to Mitigate the Risks of Cases On Board Ships***.

The new 48 page Guidance has been developed with support from a number of prominent international bodies including:

- The International Maritime Organization (IMO)
- The European Centre for Disease Prevention and Control (ECDC)
- The International Maritime Health Association (IMHA)
- The International Transport Workers Federation (ITF)
- INTERTANKO

The measures highlighted in the Guidance include advice on managing port entry restrictions, shipboard measures to address risks associated with COVID-19, managing cases of COVID-19 on board ship when at sea, assistance for all seafarers to access medical care when in ports, and dealing with other medical issues during COVID-19.

In addition to the new PCR Testing Procedures Matrix, the publication also includes updated practical advice on the use of masks, renewing prescriptions, support and logistics supply, decision making for on board suspected or confirmed COVID-19 cases and measures to enhance mental health and wellbeing. It contains sample crew/passenger locator cards and health self-declaration forms, and a number of posters that can be printed out and displayed.

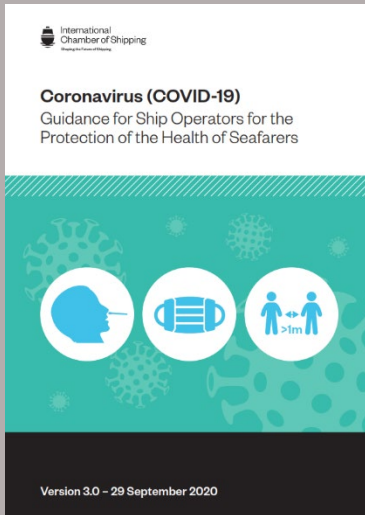
Guy Platten, Secretary General of the International Chamber of Shipping says: "Our seafarers continue to work tirelessly to ensure the global supply of goods and services during the COVID-19 pandemic. It is essential that governments and shipping companies do all they can to support this updated Guidance, and seafarers use its recommendations to ensure we all play our part to keep everyone safe."

The Guidance is for use on all types of ship and aims to recognise the needs of both cargo and passenger ships. It is recognised that cargo ships are unlikely to have a fully trained doctor or nurse on board and that medical treatment on cargo ships will be provided by a crew member with training to STCW medical requirements.

***Coronavirus (COVID-19) - Guidance for Ship Operators for the Protection of the Health of Seafarers*** will be distributed to seafarers through the International Chamber of Shipping's network of national member associations, is free to download from the International Chambers of Shipping's website [www.ics-shipping.org](http://www.ics-shipping.org), and will be shared via social media and through partner organisations that contributed to the publication.

To obtain your copy of ***Coronavirus (COVID-19) - Guidance for Ship Operators for the Protection of the Health of Seafarers*** please visit the [ICS website](#).

\* *Source: Johns Hopkins University*



## Coronavirus (COVID-19) - Guidance for Ship Operators for the Protection of the Health of Seafarers

*Please click on image to download cover image.*

**For further information please contact Debra Massey on +44 1296 682675, email [dmassey@elabor8.co.uk](mailto:dmassey@elabor8.co.uk)**

### **NOTES TO EDITORS**

#### **ICS**

[The International Chamber of Shipping \(ICS\)](#) is the principal international trade association for shipowners and operators, concerned with all technical, legal employment affairs and policy issues that may affect international shipping. ICS membership comprises national shipowners' associations in Asia, Europe and the Americas whose member shipping companies operate over 80% of the world's merchant tonnage.