



Coronavirus Disease South East Asia Port Implications

Indonesia

All ports – The following will be implemented at all ports.

- Incoming vessels from all other countries will first be inspected by Quarantine officer at anchorage (OB).
- Nobody can come on board, no loading activity can be conducted before arrival inspection by quarantine officer is completed. Free Pratique will only be granted if crew are not suspected of coronavirus & all crew are in good condition / after inspection completed.
- Arrival inspection will take about 2-3 hours by quarantine officer at outer anchorage.
- If any crew members are suspected to have the coronavirus disease, all activity will be suspended and vessel will be quarantined. She will not be allowed to proceed alongside jetty or load at anchorage, and shall wait for quarantine officer's decision with indefinite waiting time.
- Any person who has spent the last 14 days or more in mainland China is not allowed to enter, or transit, through Indonesia and Indonesian ports

The Ministry of Transportation has decided to delay flights to / from Mainland China with the exclusion of Hong Kong and Macau. The delay is in effect from Wednesday, 5 February 2020 at 00.00 WIB until a deadline to be determined at a later date.

Malaysia

All ports –

Effective February 17, all respective companies must provide face masks , hand gloves and sanitizer to all personnel.

Effective February 18, all foreigners from affected countries are required to fill declaration form provided by Immigration Department.



Coronavirus Disease South East Asia Port Implications

Malaysia

(cont'd.)

Effective February 28, Not to Land (NTL) for all crews provinces from Daegu , Cheongdon , Zhejiang , Hubei, Wuhan and Jiangsu, Lombardy, Veneto region. Crews that arrives at KUL Airport will be given a Health Alert Card which MUST be kept for the next 14 days. Health Alert Card (HAC) issued by the MOH for passengers to declare their current state of health.

Effective March 2, documents (maritime declaration of health, voyage memo & crew list) must be submitted to Port Health officer within 48 to 72 hrs before vessel arrival.

Effective March 9, all cruise vessels are barred from entry to Malaysian ports with immediate effect until further notice. Special entrance have been allocated for foreigners that arrived from affected country, screening will be done based on passport & flight ticket. Visitors that have been declined/rejected to enter all international airports / seaports will be arranged to return back to their hometown.

Effective March 16, cruise vessels can enter Malaysian Ports if in compliance with the terms as below :

- Disembarkation of crew which is seriously ill.
- To receive supplies like food, water , gas and repair or maintenance work for the particular vessel.
- Disembarkation only for Malaysian Crew or Malaysian Nationality and should undergo health screening by Port Health prior to disembarkation.
- Vessel that has been or still on international waters but hasn't visited any other ports nor done any crew change or visitors from previous port.
- Cruise vessel has permission to dock at international waters.

Effective March 17, all cruise vessel & yachts are barred from entering Malaysian ports and availing of immigration facilities.

- Passenger ferries are restricted from bringing foreign visitors into Malaysia
- No sign-on & sign-off formalities are allowed during this period.
- Only barter trade & cargo vessels that bring food supply will be allowed to enter
- Cargo vessel crew can be given landing pass but not allowed to go out from port area.



Coronavirus Disease South East Asia Port Implications

Malaysia

(cont'd.)

Bintulu – Refer to flow chart guideline on the next page.

Effective 16th March

- All visitors (foreign and domestic) coming into Sarawak and returning Sarawakians will issued a 14 Day Stay Home Notice (SHN).
- Exemptions shall only be given by the State Health Department to those who required to travel under special circumstances (official and business duties).

Johor (Pasir Gudang, Pengerang, Tanjung Pelepas, Tanjung Langsat) – Screening will be conducted at berth. Temporary stop for SIRE inspection on board vessel. If it is urgent and compulsory, it must be done at anchorage (SIRE inspector embark/disembark at anchorage).

Kuantan – Screening process will conducted at berth by the Port Health.

Labuan – Refer to flow chart guideline on the next page. Vessel with less than 14 days departure from affected country will be put on Status B (quarantine at Berth) or status C (quarantine at anchorage). Ship shore leave will be suspended for vessels with status B & C.

Lumut – Screening will conducted at berth. No shore leave will be given until further notice by Port Health.

Melaka – Screening will be conducted at anchorage.

Penang – Screening will be conducted at anchorage.

Port Dickson – Screening will be conducted at anchorage.

Port Klang – Screening will be conducted at berth. If any crew with fever over 38 degree celsius Port Health shall arrange to transport the crew for medical attention.

For Northport, all personnel are required to go through body temperature screening before being allowed to enter Northport premises.

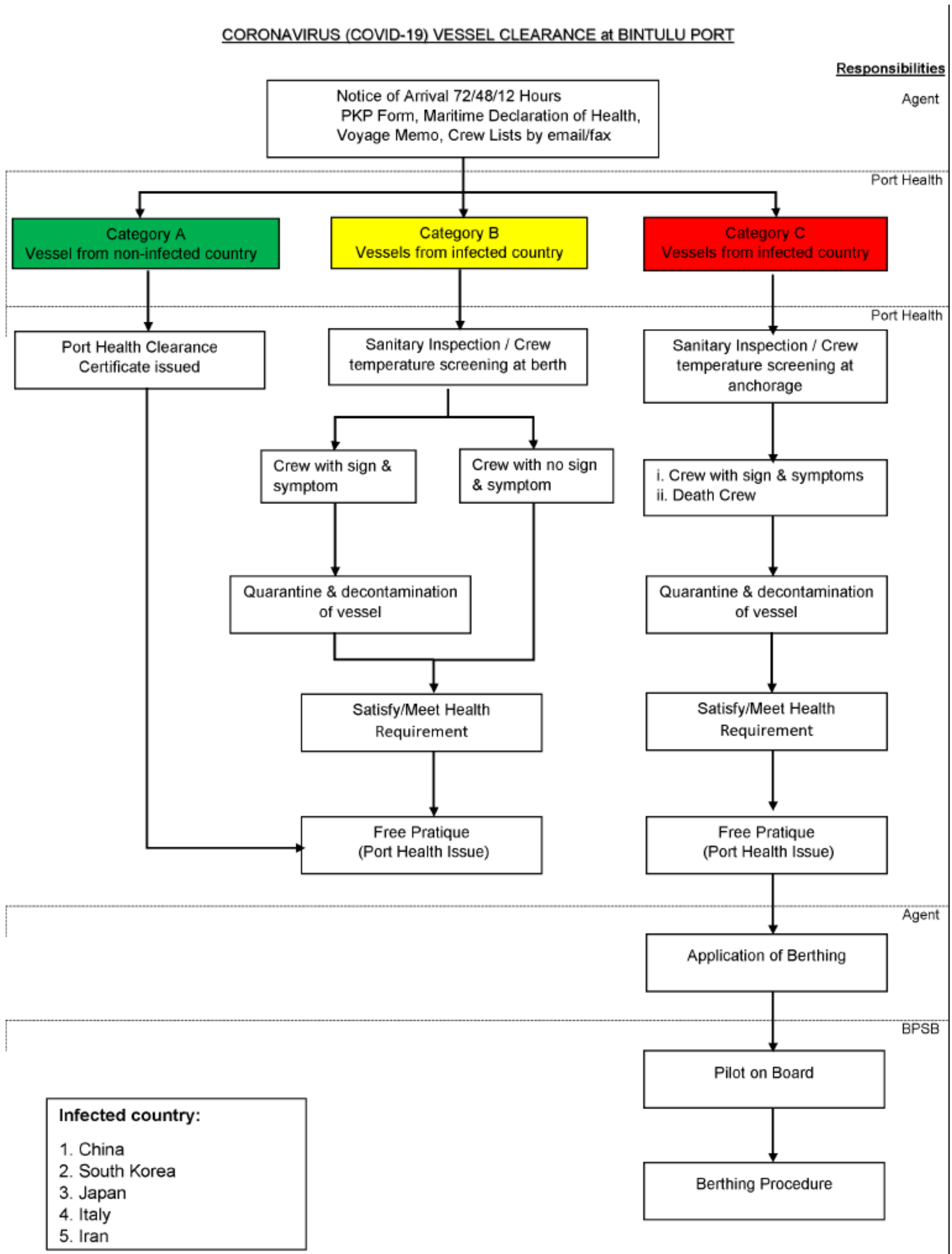
Sabah (Kota Kinabalu, Sipitang, Sandakan, Lahad Datu, Tawau) - Health screening by Port Health is required for Any vessel calling from a foreign country. Screening will be conducted at anchorage. Action Taken On Arrival will be issued by Immigration to master via local agent before arrival of vessel. NTL for all crews if vessel had called affected country regardless of number of days.

Sarawak (Bintulu & Tanjung Manis) – Petronas LNG Terminal will implement virtual loading for all vessels from affected countries (China, South Korea, Japan, Italy, Iran). No personnel is allowed to board the vessel.



Coronavirus Disease South East Asia Port Implications

CORONAVIRUS (COVID-19) VESSEL CLEARANCE at BINTULU PORT





Coronavirus Disease South East Asia Port Implications

Malaysia

(cont'd.)

All required documents should be submitted prior to vessel berthing.

Vessel from affected country will be given status B. Vessel less 14 days from affected country will be put on Status B (quarantine at berth) or status C (quarantine at anchorage).

Travel restriction for those who visited Japan, Singapore, Myanmar, Cambodia, Vietnam, Laos, Indonesia & Europe within past 14 days and must declare this to the Health Department.

Effective March 12, in addition to the above travel restriction countries, United States of America & Brunei has been included as per latest update.

Myanmar

All ports - Myanmar Immigration suspended visa on arrival for all Chinese citizen. Maritime Port Authority no longer gives shore passes to Chinese crew and no longer allow crew change.

Port health officers will attend and board all incoming vessels on arrival. Health cards will be given to each crew to complete and sign on arrival.

Master of vessel must declare crew health prior vessel arrival.

Effective March 15, travel suspension for any foreigner who has traveled to Korea and China virus hot spots in the past 14 days. Myanmar citizens who have been to hot spots in Korea and China will be quarantined at designated facilities. All individual who travelled to areas in Korea that were not hot spots will be subject to 14 day home quarantine.

Anyone who has traveled to Italy, Iran, France, Spain, Germany will be subject to 14 day quarantine at a designated facility.

Philippines

All ports – The following guidelines will be implemented for cruise vessels:

- Vessels with passengers who were in Mainland China, Hong Kong or Macau, regardless of nationality, will not be allowed to dock.
- Vessels who did not call Mainland China, Hong Kong or Macau must undergo a health screening, submit a Maritime Declaration of Health and other pertinent documents related to 2019 nCov.
- If allowed to dock, all travel excursions in the Philippines must be submitted. The master of the vessel must immediately report to a Quarantine Medical Officer any occurrence of flu like symptoms.



Coronavirus Disease South East Asia Port Implications

Philippines

(cont'd.)

Land, domestic air and domestic sea travel to and from the NCR shall be restricted. All workers, whether employed or self-employed, will be provisionally allowed to travel to and from the NCR, subject to review by the IATF if public health considerations warrants.

- All departing passengers shall be allowed transit through the NCR. Provided, that proof of confirmed international travel itinerary scheduled within 12 hours from entry.
- The movement of cargoes to and from the NCR, or in such other places which may be the subject of a community quarantine, shall be unhampered.
- Inbound travelers from Iran and Italy are required to present a medical certificate issued by competent medical authorities within 48 hours, signifying that the traveler has tested negative to COVID-19.

Batangas –

- Transport and Security: Public transport (land and sea) within the Batangas Province is still operational and shall serve passengers going to and from neighboring provinces for work, provided that:
- For Sea, public transport: passengers are cleared from triage by Maritime Industry Authority (MARINA).
- For Sea, private transport: passengers are cleared from triage by Philippine Port Authority.
- For Sea and Land public transport, passengers shall provide proper identification and work ID as pre-requisite for issuance of ticket.
- Bureau of Immigration shall submit the list of incoming individuals from other countries daily to the Provincial Health Office.
- Transport of basic and lifeline commodities such as, but not limited to food, medicines, medical supplies, gas, fuel and like shall be hampered.

Siquijor – Foreign Vessels are banned from docking at any port in the Province of Siquijor until further notice.

Surigao Del Norte -

- Travel ban to all incoming and outgoing domestic vessels
- All incoming foreign vessels (regardless of nationality and the country of origin) will be banned to enter the province.

Oriental Mindoro

- An executive order no. 22 series of 2020, restricting the movement of people and goods in order to prevent the entry and spread of the COVID-19 in the province.
- All persons, regardless of their origin and mode of travel, are prohibited from entering the province of Oriental Mindoro.
- Delivery trucks, their drivers and helpers, shall only be allowed inside the port of Calapan City or Roxas while unloading the cargo.
- Fuel haulers can travel to their point of destination provided that drivers and helpers shall remain inside their vehicles.



Coronavirus Disease South East Asia Port Implications

Singapore

As part of the measures to prevent the spread of the novel coronavirus (2019-nCoV), all vessels that had been to any ports in China, Iran, Italy, Spain, France, Germany & Republic of Korea in the past 14 days; all arriving vessels with crew/passengers who have travelled to Mainland China, Iran, Italy, Spain, France, Germany & Republic of Korea within the last 14 days are required to submit the following documents to the Port Health Unit /Central Regional Office 24 hours before arrival at Singapore Port:

- The Maritime Declaration of Health Form (The MDH must be completed and submitted a maximum of 24 hours before arrival, with an update, if the health status of any one on board changes).
- IMO Crew list / Passenger list reflecting date and port crew/passenger joined from
- Current copy of Ship Sanitation Certificates
- Last 10 ports of call list

The listed documents must be submitted regardless whether there are any sick crew/passengers on board. This procedure was implemented with effect from 1st

February 2020 at 2359 hours local time This will also apply to all on signing crews in Singapore No sign off will be granted until further notice.

Affected vessels are allowed to enter port to carry out their intended operations however all crews will be granted Not-To-Land (NTL) status and to remain on board throughout vessel's port call. No signing off will be granted for affected vessels. For vessels that have been in China more than 14 days prior arrival Singapore, there will be no issues with signing off (sub to meeting Immigration requirements).

With immediate effect, Singapore will cease port calls for all cruise vessels.

All short-term visitors who are nationals of any ASEAN country must submit requisite information on their health to the Singapore Overseas Mission in the country where they reside before their intended date of travel.

The submission will have to be approved by Singapore's MOH before they travel to Singapore, and the approval will be verified by the Immigration and Checkpoints Authority (ICA) officers at the Singapore checkpoints.

Short-term visitors who arrive in Singapore without the necessary approval will be denied entry into Singapore. People with a travel history to Japan, Switzerland & the United Kingdom the last 14 days will be issued a 14 days stay at home notice.



Coronavirus Disease South East Asia Port Implications

Singapore

(cont'd.)

MPA - Favorable considerations for Singapore registered ships (SRS)

Guidelines for extension of sea service beyond contract period:

SRS owners and managers unable to repatriate seafarers who have completed

the employment duration as stipulated in the seafarers' SEA in accordance with

Section 23 of the MLC Act may submit a request to MPA for extension of the sea

service period. Documents to be submitted as follows:

- Employment details of the affected seafarers
- Confirmation of consent by the affected seafarers

The extension of contractual period of the seafarers should be reflected on the

corresponding SEA of the affected seafarers. Ship owners and managers should

also ensure that the notification of crew list to MPA, in accordance with Section 15 of the MLC Act, is carried out.

Guidelines for extension of sea service period beyond qualification

For revalidation deadline - Consideration will be given to allow seafarers who hold foreign issued Certificates of Competencies (COC) to continue serving onboard SRS, if they are unable to revalidate their COC before the expiry date due to the COVID-19 outbreak. SRS owners and managers may submit such request in-writing to MPA, accompanied with a confirmation of continued validity from the issuing authority of the seafarer's COC. MPA will issue a flag administration confirmation letter for the seafarer to continue serving onboard SRS. No fees will be charged for this endorsement.

For Singapore COC holders, MPA will issue a letter to extend validity of the COC of the holders who may not be able to disembark due to the captioned grounds, similarly without fees.

Guidelines for extension of mandatory surveys, audits and expiry of statutory certificates

Consideration will also be given to the extension of mandatory statutory surveys, inspections or audits. Application for extension of surveys/inspections/audits or validity of statutory certificates may be submitted to MPA, accompanied by recommendation from the recognised organisation (RO) that issued the relevant certificate on behalf of MPA.



Coronavirus Disease South East Asia Port Implications

Thailand

Vessels that called Chinese ports before Thailand must report any symptoms of crew / passengers onboard, with intensive screening for those who were in China 14 days prior. Symptoms must be reported 24 hours prior arrival.

Any ships from China, H.K, Macao, Taiwan, Japan, South Korea, Singapore, Germany, France, Italy and Iran will be monitored by health control. Master of all ships must report temperature of crew on board every day, 7 days before arrival in Thai waters. Authorities will attend on board to perform quarantine screening. All crew must have thermal scans and fever condition checked. If any crew have fever or a suspected symptom, s/he will be placed under 14 days of quarantine and further check by hospital. If individual is found to be infected with Covid-19 on board, that vessel is prohibited to enter the port until health authorities ensure that vessel is free from infection.

Vietnam

Immigration office has announced below information which is applied from 15 mar until further notice:

- 1.China, Hong Kong, Macau, Korean, Italian, Iran are not allowed to entry Vietnam.
- 2.Visa exemption of Japan, Korea, United Kingdom, French, Germany, Italy, Spain, Denmark, Norway, Sweden, Finland are not accepted.
- 3.Stop issuing visa for United Kingdom & Schengen countries.
- 4.Visa on arrival at airport of all nationalities are not accepted. Exit visa at port are not accepted either.
- 5.All nationalities will apply visa at Vietnam embassy of their countries. Condition for visa application will depends on requirement of Vietnam embassy at each country.



Coronavirus Disease South East Asia Port Implications

Vietnam

(cont'd.)

6. The rest of nationalities who can enter Vietnam by exemption visa or valid visa, if immigration officer find out they have visited areas like UK, Schengen countries, China, Korea, they have 2 options:

- OPTION 1: Continue Vietnam entry, then they are isolated for 14 days, after 14 days if they are negative of covid-19, they are allowed into entry Vietnam.
- OPTION 2: Fly out of Vietnam.

7. Upon arrival airport, if quarantine officer finds out someone has a symptom of covid-19, they will isolate everyone on this flight, all guests on flight will have 2 options:

- OPTION 1: Continue Vietnam entry, then they are isolated for 14 days, after 14 days if they are negative of covid-19, they are allowed into entry Vietnam.
- OPTION 2: Fly out of Vietnam.

8. For shipping line related to crew change / attending vessel, pls send us below info for checking with immigration / quarantine office:

- List of 10 last port call
- nationality of crew / technician / superintendent, etc

Finally, immigration / quarantine office will decide which vessel can be arranged crew change or not.

9. If the vessel called China, Hong Kong, Macau, Korea, EU Ports, crew change cannot be arranged; crews on board are not allowed to go on shore for all purposes.

10. For vessels that have not called the listed ports, crew change can be arranged with some conditions. Quarantine officer at port will:

- On-signer: check temperature or health condition before allowing enter port.
- Off-signer: they may check temperature daily and / or the date of repatriation.